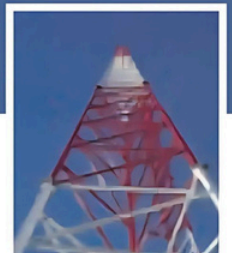
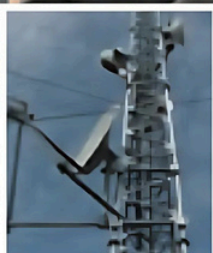
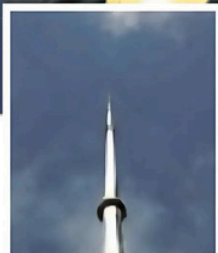


DATA STRUCTURES

EXPERTS IN ELEVATED ENGINEERING



TELECOMS TOWERS



EXPERTS IN ELEVATED ENGINEERING

DESIGNED: IN ACCORDANCE
WITH EUROCODES 1 & 3

MANUFACTURED: IN
ACCORDANCE WITH EN1090-
1:2009+A1:2011 CE MARKING
STANDARDS

WARRANTY: 10-YEAR FULL
MANUFACTURERS WARRANTY



Data Structures (established 1998) are a leading supplier & installer of MASTS | TOWERS | MONOPOLES and MET Measurement Technologies throughout Ireland & UK.

Operating out of Dublin & Carlisle, we are strategically located to service our clients. We offer a comprehensive concept to completion service, including: survey - design - manufacture - construction - commissioning - lifecycle maintenance - certification.

We are passionate about customer service and immensely proud of our long-term relationships with our clients, some of whom continue to support us for over two decades.

DATA STRUCTURES | Experts in Elevated Engineering since 1998.

Dublin: + 353 (0)1 555 3244 | info@datastructures.ie

Carlisle: +44 (0)7549 170 520 | hello@datastructures.co.uk

OUR BRANDS



OUR RANGE OF SLX MAST STRUCTURES:



SLX1/T:

GUYED TUBULAR MAST. Various versions available depending on purpose. Ideal structure for rooftop sites, PMR and Meteorology.



SLX2/T:

SELF SUPPORTING MONOPOLE. Various versions available depending on purpose. Ideal for Wireless Links. Floodlighting and CCTV.



SLX3/T:

GUYED LATTICE MAST (light duty). Various versions available depending on purpose. Ideal for Broadcast, PMR, Wireless Links.



SLX4/T:

GUYED LATTICE MAST (medium /heavy duty): Various versions available for increased payload, usually installed on high sites.



SLX5/T:

SELF SUPPORTING LATTICE TOWER. Various versions available depending on payload and location. Available from 6m to 160m.

SLX1/T: Guyed Tubular Mast

- Available in light (LD), medium (MD) & heavy duty (HD) version.
- LD is an ideal rooftop solution, available to 24m, for PMR & Wireless Links.
- MD is available to 36m and ideal for local area Broadcast & Link antennas.
- HD is available to 70m as a temporary solution for Meteorology.
- Included are guy wires, guy anchors, base plate, earthing etc.



MAST HEIGHT	LD 24m	MD 36m	HD 70m
GUY RADIUS	15m	24m	45m
GUY WIRES	6mm RHOL galvanised	8mm RHOL galvanised	8mm RHOL galvanised
GALVANISING	BS EN ISO 1461 - 85 microns. (Upgrades available for coastal sites)		
MATERIALS	EN10025-2:2004. EN10210-1:2006. Grades S275 & S355		
DESIGN	Eurocodes 1 & 3		
MANUFACTURE	EN1090-1:2009 +A1:2011 CE marking standards		

* The above information is provided for information purposes only and subject to site specific alterations at contract stage.

SLX2/T: SELF SUPPORTING MONOPOLE FOR TELECOMMUNICATIONS & SECURITY

Designed as permanent, stand alone solution for Telecoms, CCTV & Lighting.

Available from 6m to 50m depending on payload and site conditions.

Full range of antenna/lamp support brackets, foundations, earthing, aviation lights etc. available.



MAST HEIGHT	Available from 6m to 50m (depending on application)
FOUNDATIONS	Site specific depending on payload and site conditions
GALVANISING	BS EN ISO 1461 (85 Microns - upgrade available for coastal sites)
MATERIALS	EN10025-2:2004. EN10210-1:2006
DESIGN	Eurocodes 1 & 3
MANUFACTURE	EN1090-1:2009 +A1:2011 CE marking standards

* The above information is provided for information purposes only and subject to site specific alterations at contract stage.

SLX3/T: GUYED LATTICE MAST (LIGHT DUTY)

- Light duty guyed mast (380mm - 500mm face width).
- Ideal for Broadcast, PMR & Wireless Links.
- Climbing steps incorporated into one face.
- 80m version available as a temporary solution for Meteorology.
- Included are guy wires, guy anchors, base plate, earthing etc.
- Accessories include Anti climb frame, Fall arrest system, Aviation lights etc

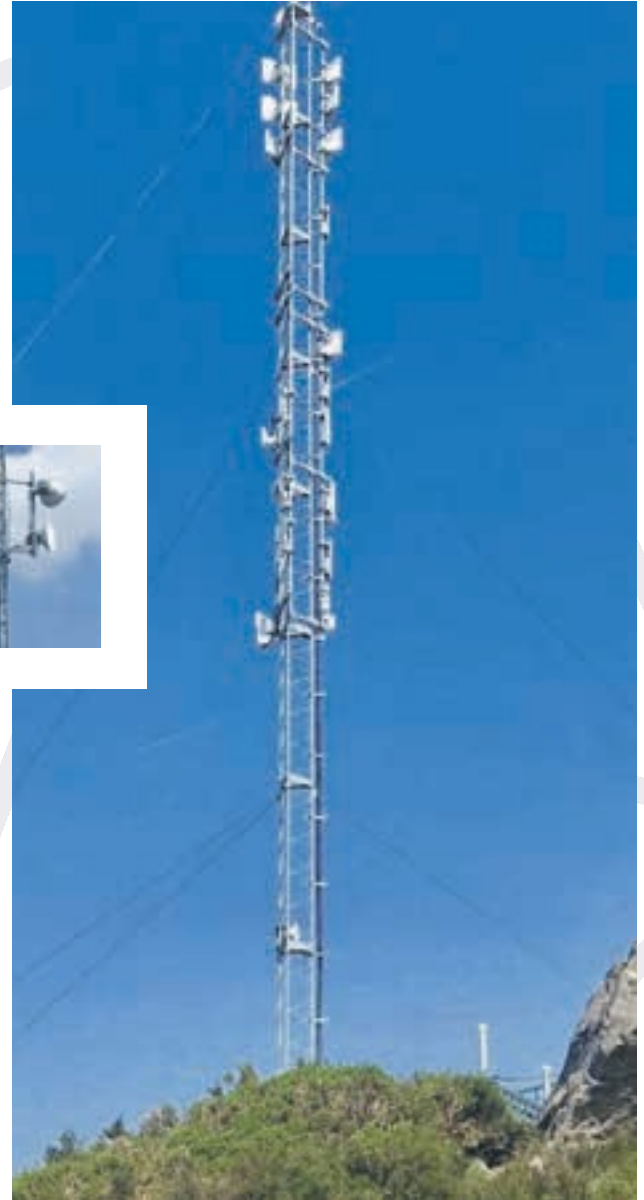


MAST HEIGHT	24m	36m	80m
GUY RADIUS	19m	28m	63m
GUY WIRES	6mm RHOL galvanised	8mm RHOL galvanised	8mm RHOL galvanised
GALVANISING	BS EN ISO 1461 - 85 microns. (Upgrades available for coastal sites)		
MATERIALS	EN10025-2:2004. EN10210-1:2006. Grades S275 & S355		
DESIGN	Eurocodes 1 & 3		
MANUFACTURE	EN1090-1:2009 +A1:2011 CE marking standards		

* The above information is provided for information purposes only and subject to site specific alterations at contract stage.

SLX4/T: GUYED LATTICE MAST (HEAVY DUTY)

- Heavy duty guyed mast (600mm – 1000mm face width).
- Ideal for Broadcast, Microwave & Wireless Links on High Sites.
- Face mounted climbing ladder & Anti twist frames (as required).
- 160m version available for Meteorology.
- Included are guy wires, guy anchors, base plate, earthing etc.
- Accessories include Anti climb frame, Fall arrest system, Aviation lights etc.



MAST HEIGHT	36m	80m	100m
GUY RADIUS	28m	63m	78m
GUY WIRES	8mm RHOL galvanised	8mm RHOL galvanised	10mm RHOL galvanised
GALVANISING	BS EN ISO 1461 - 85 microns. (Upgrades available for coastal sites)		
MATERIALS	EN10025-2:2004. EN10210-1:2006. Grades S275 & S355		
DESIGN	Eurocodes 1 & 3		
MANUFACTURE	EN1090-1:2009 +A1:2011 CE marking standards		

* The above information is provided for information purposes only and subject to site specific alterations at contract stage.

SLX5/T: SELF SUPPORTING LATTICE TOWER

- Available in light (LD), medium (MD) & heavy duty (HD) version
- LD is a Slimline structure (all welded modules).
- MD is Tubular structure (triangular or square).
- HD is Angle structure (square in plan).
- 160m version available for Meteorology.
- Included are foundation frame & access ladder.
- Accessories include Anti climb frame, Fall arrest system, Aviation lights, platforms etc.



MAST HEIGHT	Site specific for payload application
FOUNDATIONS	Site specific for payload and local environmental conditions BS
GALVANISING	EN ISO 1461 (85 microns - upgrades available for coastal sites)
MATERIALS	EN10025-2:2004. EN10210-1:2006. Grades S275 & S355
DESIGN	Eurocodes 1 & 3
MANUFACTURE	EN1090-1:2009 +A1:2011 CE marking standards

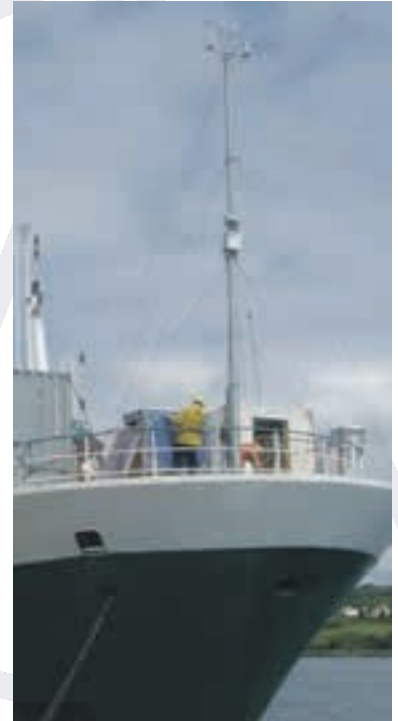
* The above information is provided for information purposes only and subject to site specific alterations at contract stage.

ACCESSORIES AND CUSTOM DESIGNS

Why not compliment your SLX Mast, Tower or Monopole purchase with fittings from Data Structures and other leading suppliers.

- ACCESS LADDERS
- AVIATION LIGHTING
- ANTENNA SUPPORT STEELWORK
- ANTI-CLIMB FRAMES
- ANTI-TWIST GUY FRAMES
- BIRD FLIGHT DETERRANTS
- CABLE MANAGEMENT BRACKETS
- EARTHING KITS
- FALL ARREST SYSTEMS
- GALVANISING UPGRADE TO 115 MICRONS
- HIGH VISIBILITY DAYLIGHT MARKERS
- MET SENSOR SUPPORT BOOMS
- OVERHEAD CABLE GANTRIES
- REST / WORK PLATFORMS
- ROOFTOP ANTENNA BALLAST MOUNTS
- ROOFTOP ANTENNA STEELWORK
- TOWER STRENGTHENING STEELWORK

Data Structures also offer Custom Designs or modified standard designs for unusual applications such as shrouded structures, Tilttable tubular & lattice masts and Heavy ice loading structures. We also design tower strengthening steelwork for existing installations.



EXPERTS IN ELEVATED ENGINEERING
(since 1998)

DATA STRUCTURES

Ireland:

B4 Bymac Centre, Ballycoolin,
Dublin D15 HW02.

T: +353 (0)1 555 3244

E: info@datastructures.ie

United Kingdom:

Solway House Business Centre,
14 Stephenson Road, Durranshill
Industrial Estate, Carlisle CA1 3NX.

T: +44 (0)7549 170 520

E: hello@datastructures.co.uk

