

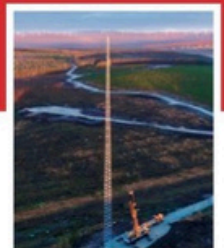
DATA STRUCTURES

EXPERTS IN ELEVATED ENGINEERING



SLX

MET MASTS



EXPERTS IN ELEVATED ENGINEERING
(since 1998)

WWW.DATASTRUCTURES.IE

WWW.DATASTRUCTURES.CO.UK

■ **Data Structures** (established 1998) are a leading supplier & installer of MASTS | TOWERS | MONOPOLES and MET Measurement Technologies throughout Ireland & UK.

Operating out of Dublin & Carlisle, we are strategically located to service our clients. We offer a comprehensive concept to completion service, including: survey - design - manufacture - construction - commissioning - lifecycle maintenance - certification.

We are passionate about customer service and immensely proud of our long-term relationships with our clients, some of whom continue to support us for over two decades.

DATA STRUCTURES | Experts in Elevated Engineering since 1998.

Dublin: + 353 (0)1 555 3244 | info@datastructures.ie

Carlisle: +44 (0)7549 170 520 | hello@datastructures.co.uk

OUR BRANDS



OUR RANGE OF SLX MET MAST STRUCTURES:



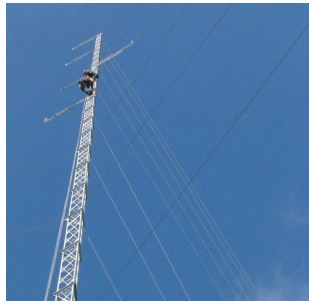
SLX1/W:

GUYED TUBULAR TEMPORARY MET MAST TO 70M



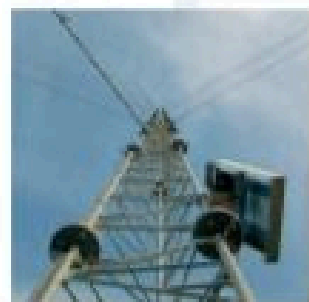
SLX2/T:

SELF SUPPORTING WIND FARM COMMUNICATIONS MONOPOLE



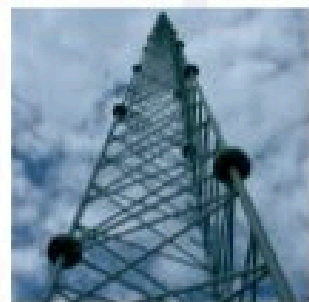
SLX3/W:

GUYED LATTICE LIGHT DUTY MET MAST



SLX4/W:

GUYED LATTICE MEDIUM / HEAVY DUTY MET MAST



SLX5/W:

SELF SUPPORTING LATTICE PERMANENT MET TOWER TO 160M

SLX1/W: GUYED TUBULAR TEMPORARY MET MAST:

Designed as temporary mast solution for Wind Resource Assessment & Power Curve Testing.

Available from 10m to 70m. Full range of meteorological instrument support booms, ground anchors, foundations, earthing, aviation lights, cabinet brackets etc. available.

Designed and supplied to IEC61400.12.1 (Ed. 2).



MAST HEIGHT	70m	60m	50m
GUY RADIUS	45m	39m	33m
GUY WIRES	8mm RHOL galvanised	6mm RHOL galvanised	6mm RHOL galvanised
GALVANISING	BS EN ISO 1461 - 85 microns. (Upgrades available for coastal sites)		
MATERIALS	EN10025-2:2004. EN10210-1:2006. Grades S275 & S355		
DESIGN	Eurocodes 1 & 3. IEC61400.12.1 (Ed. 2)		
MANUFACTURE	EN1090-1:2009 +A1:2011 CE marking standards		

* The above information is provided for information purposes only and subject to site specific alterations at contract stage.

SLX2/T: SELF SUPPORTING WIND FARM COMMUNICATIONS MONOPOLE

Designed as permanent stand alone structure to be installed at substation for data communications via wireless link antennas or satellite link dish.

Available from 6m to 30m as line of sight requirement

Full range of antenna support brackets, foundations, earthing, aviation lights etc. available



MAST HEIGHT

Available from 6m to 30m (as per line of sight requirement)

FOUNDATIONS

Site specific for antenna loading and local environmental conditions

GALVANISING

BS EN ISO 1461 (85 Micron - upgrade available for coastal sites)

MATERIALS

EN10025-2:2004. EN10210-1:2006. Grades S275 & S355

DESIGN

Eurocodes 1 & 3

MANUFACTURE

EN1090-1:2009 +A1:2011 CE marking standards



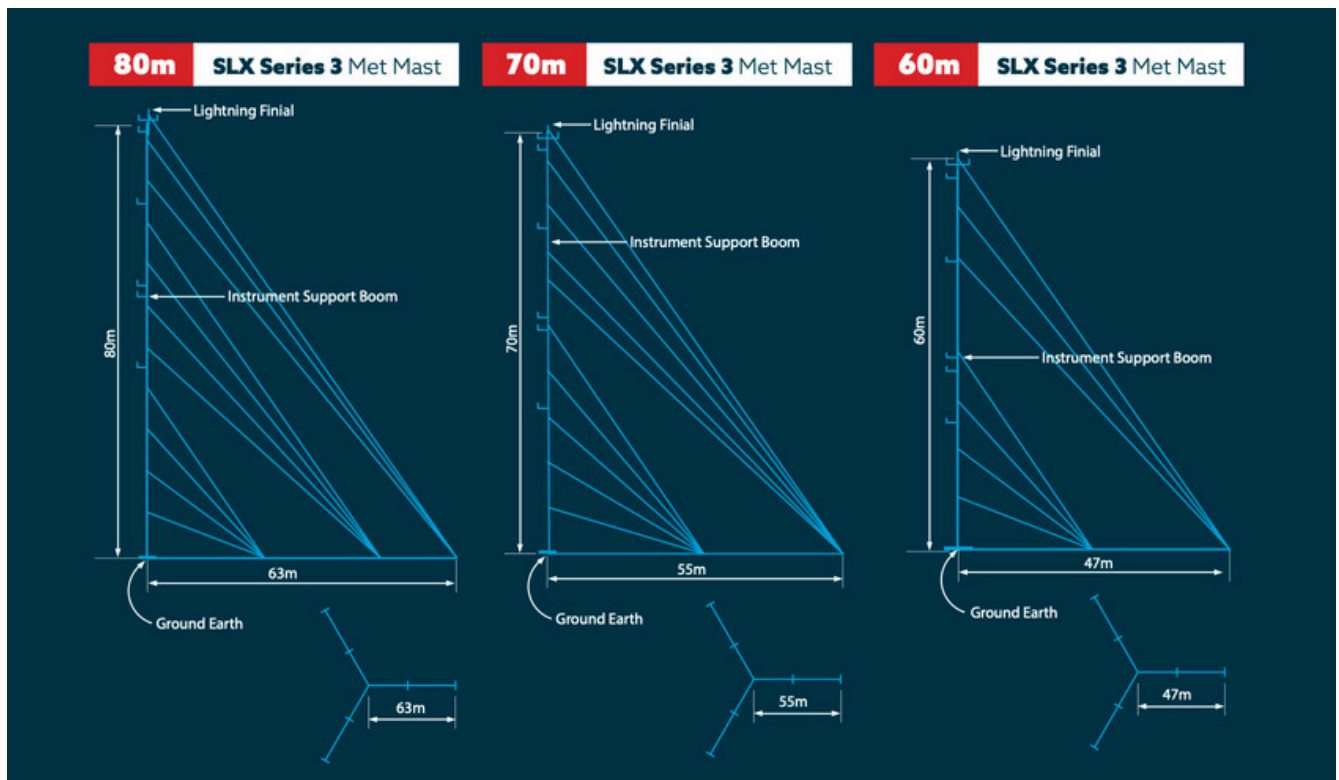
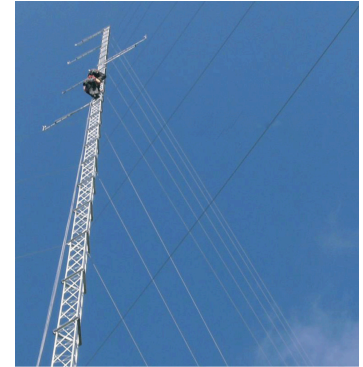
* The above information is provided for information purposes only and subject to site specific alterations at contract stage.

SLX3/W: Light Duty Lattice Met Mast

Designed as temporary mast solution for Wind Resource Assessment & Power Curve Testing.

Available from 10m to 80m. Full range of meteorological instrument support booms, ground anchors, foundations, earthing, aviation lights, cabinet brackets etc. available.

Designed and supplied to IEC61400.12.1 (Ed. 2).



MAST HEIGHT	80m	70m	60m
GUY RADIUS	63m	55m	47m
GUY WIRES	8mm RHOL galvanised	8mm RHOL galvanised	6mm RHOL galvanised
GALVANISING	BS EN ISO 1461 - 85 microns. (Upgrades available for coastal sites)		
MATERIALS	EN10025-2:2004. EN10210-1:2006. Grades S275 & S355		
DESIGN	Eurocodes 1 & 3. IEC61400.12.1 (Ed. 2)		
MANUFACTURE	EN1090-1:2009 +A1:2011 CE marking standards		

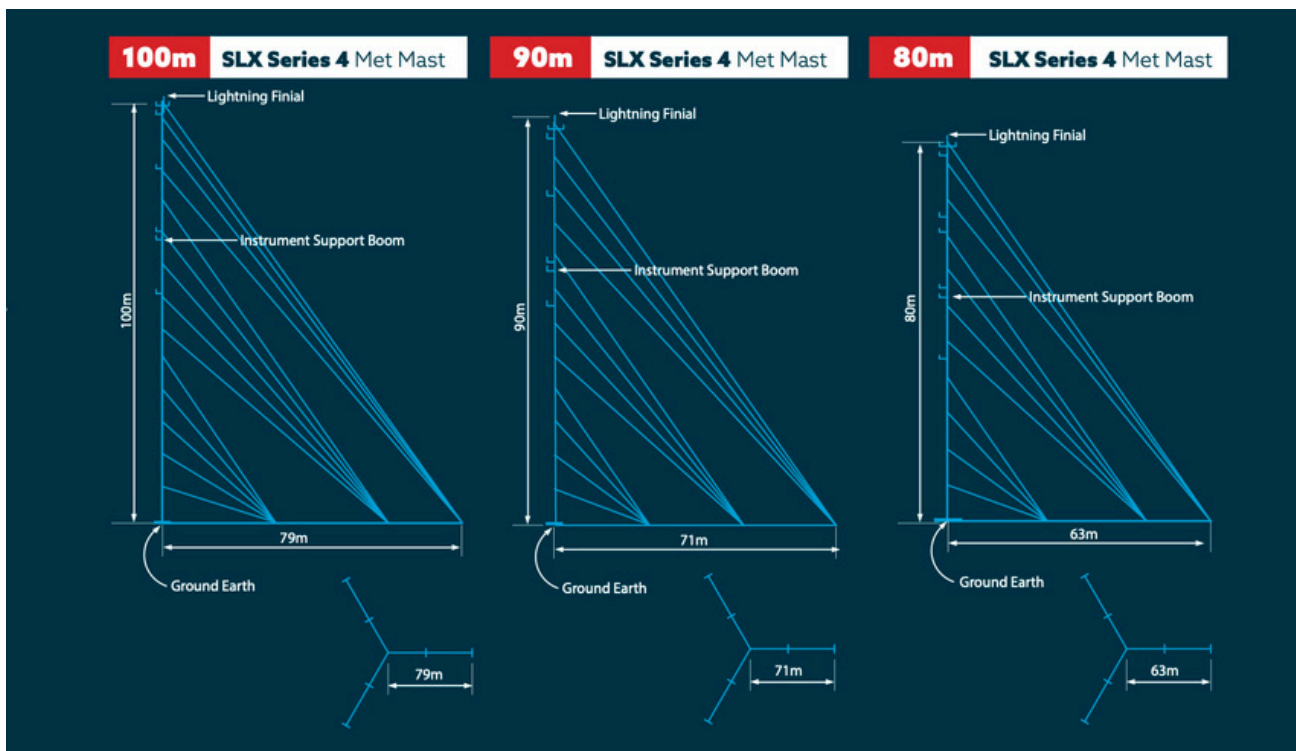
* The above information is provided for information purposes only and subject to site specific alterations at contract stage.

SLX4/W: Heavy Duty Lattice Met Mast

Several design variants available for heavy payloads, higher site altitudes and more extreme environmental conditions.

Available from 10m to 160m. Full range of meteorological instrument support booms, ground anchors, foundations, earthing, aviation lights, cabinet brackets etc. available.

Designed and supplied to IEC61400.12.1 (Ed. 2).



MAST HEIGHT	100m	90m	80m
GUY RADIUS	79m	71m	63m
GUY WIRES	10mm RHOL galvanised	10mm RHOL galvanised	10mm RHOL galvanised
GALVANISING	BS EN ISO 1461 - 85 microns. (Upgrades available for coastal sites)		
MATERIALS	EN10025-2:2004. EN10210-1:2006. Grades S275 & S355		
DESIGN	Eurocodes 1 & 3. IEC61400.12.1 (Ed. 2)		
MANUFACTURE	EN1090-1:2009 +A1:2011 CE marking standards		

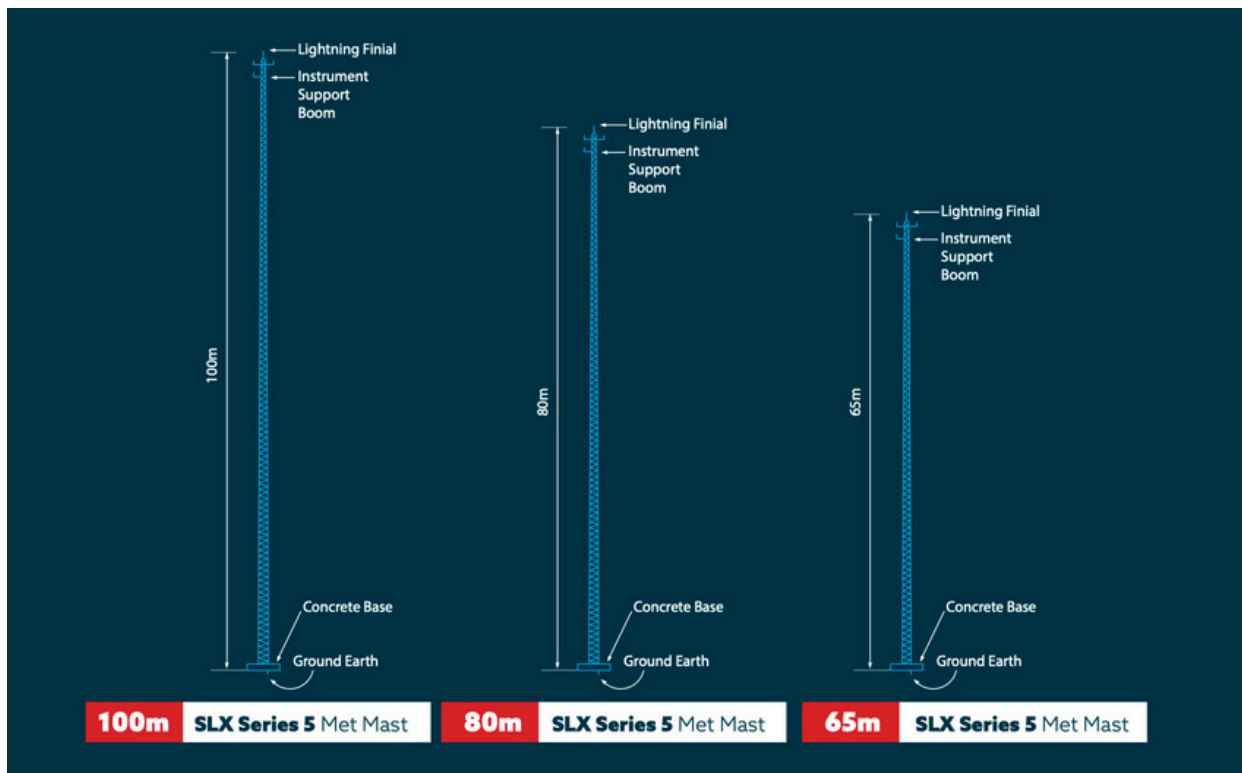
* The above information is provided for information purposes only and subject to site specific alterations at contract stage.

SLX5/W: SELF-SUPPORTING LATTICE PERMANENT MET TOWER

Designed as permanent mast solution for Reference Wind speeds on operational Wind farms. Site specific structural and foundations design for high altitude, ice loading, heavy payloads.

Available from 10m to 160m. Full range of meteorological instrument support booms, ground anchors, foundations, earthing, aviation lights, cabinet brackets etc. available.

Designed and supplied to IEC61400.12.1 (Ed. 2).



MAST HEIGHT	100m	80m	65m
FOUNDATIONS	Site specific for payload and local environmental conditions		
GALVANISING	BS EN ISO 1461 (85 microns - upgrades available for coastal sites)		
MATERIALS	EN10025-2:2004. EN10210-1:2006. Grades S275 & S355		
DESIGN	Eurocodes 1 & 3		
MANUFACTURE	EN1090-1:2009 +A1:2011 CE marking standards		

* The above information is provided for information purposes only and subject to site specific alterations at contract stage.

ACCESSORIES AND CUSTOM DESIGNS

Why not compliment your Met Mast / MET Tower purchase from Data Structures with fittings from leading suppliers. We can supply you with a full package in accordance with your site specific specifications.

- ANEMOMETERS
- WIND VANES
- SENSORS:
 - Pressure
 - Temperature & Relative Humidity
 - Precipitation
- DATA LOGGERS
 - GSM communications
 - Autonomous Power by PV
 - IP66 enclosures
- EARTHING KITS
- AVIATION LIGHTING
- HIGH VISIBILITY DAYLIGHT MARKINGS
- ANTI CLIMB FRAMES
- FALL ARREST SYSTEMS
- BIRD FLIGHT DETERRENTS
- METEOROLOGICAL SENSOR SUPPORT BOOMS



**EXPERTS IN ELEVATED ENGINEERING
(since 1998)**

DATA STRUCTURES

Ireland:

B4 Bymac Centre, Ballycoolin,
Dublin D15 HW02.

T: +353 (0)1 555 3244

E: info@datastructures.ie

United Kingdom:

Solway House Business Centre,
14 Stephenson Road, Durranshill
Industrial Estate, Carlisle CA1 3NX.

T: +44 (0)7549 170 520

E: hello@datastructures.co.uk

