

# DATA STRUCTURES

EXPERTS IN ELEVATED ENGINEERING



**TELECOMS TOWERS**



**EXPERTS IN ELEVATED ENGINEERING**

**DESIGNED:** IN ACCORDANCE  
WITH EUROCODES 1 & 3

**MANUFACTURED:** IN  
ACCORDANCE WITH EN1090-  
1:2009+A1:2011 CE MARKING  
STANDARDS

**WARRANTY:** 10-YEAR FULL  
MANUFACTURERS WARRANTY



■ **DATA STRUCTURES** was established in 1998 as a leading Mast & Tower installation contractor.

In 2002 we designed and supplied our first TELECOMS TOWER and since then we have completed over 1600 mast & tower structures for our clients in many sectors including; Aviation, Broadcast, Defence, Emergency Services, Renewables, Security, Telecoms, Utilities, Wireless Technologies and many more.

In 2017 we acquired **KONA Structures** including the IP and designs for the renowned range of SLX masts, towers & monopoles for Telecommunications and Meteorology.

In 2019 we celebrate our 21st anniversary and continue to grow our business by regularly adding to our range of products, ancillaries and services.



## OUR BRANDS



**MET MASTS**



**TELECOMS TOWERS**



**RADIO MASTS**



**MONOPOLES**

## OUR RANGE OF SLX MAST STRUCTURES:



### **SLX1/T:**

**GUYED TUBULAR MAST.** Various versions available depending on purpose. Ideal structure for rooftop sites, PMR and Meteorology.



### **SLX2/T:**

**SELF SUPPORTING MONOPOLE.** Various versions available depending on purpose. Ideal for Wireless Links. Floodlighting and CCTV.



### **SLX3/T:**

**GUYED LATTICE MAST (light duty).** Various versions available depending on purpose. Ideal for Broadcast, PMR, Wireless Links.



### **SLX4/T:**

**GUYED LATTICE MAST (medium /heavy duty):** Various versions available for increased payload, usually installed on high sites.



### **SLX5/T:**

**SELF SUPPORTING LATTICE TOWER.** Various versions available depending on payload and location. Available from 6m to 160m.

## SLX1/T: Guyed Tubular Mast

- Available in light (LD), medium (MD) & heavy duty (HD) version.
- LD is an ideal rooftop solution, available to 24m, for PMR & Wireless Links.
- MD is available to 36m and ideal for local area Broadcast & Link antennas.
- HD is available to 70m as a temporary solution for Meteorology.
- Included are guy wires, guy anchors, base plate, earthing etc.



<b>MAST HEIGHT</b>	LD 24m	MD 36m	HD 70m
<b>GUY RADIUS</b>	15m	24m	45m
<b>GUY WIRES</b>	6mm RHOL galvanised	8mm RHOL galvanised	8mm RHOL galvanised
<b>GALVANISING</b>	BS EN ISO 1461 - 85 microns. (Upgrades available for coastal sites)		
<b>MATERIALS</b>	EN10025-2:2004. EN10210-1:2006. Grades S275 & S355		
<b>DESIGN</b>	Eurocodes 1 & 3		
<b>MANUFACTURE</b>	EN1090-1:2009 +A1:2011 CE marking standards		

\* The above information is provided for information purposes only and subject to site specific alterations at contract stage.

## SLX2/T: SELF SUPPORTING MONOPOLE FOR TELECOMMUNICATIONS & SECURITY

Designed as permanent stand alone solution for Telecoms, CCTV & Lighting.

Available from 6m to 50m depending on payload and site conditions

Full range of antenna/lamp support brackets, foundations, earthing, aviation lights etc. available.



**MAST HEIGHT**

Available from 6m to 50m (depending on application)

**FOUNDATIONS**

Site specific depending on payload and site conditions

**GALVANISING**

BS EN ISO 1461 (85 Microns - upgrade available for coastal sites)

**MATERIALS**

EN10025-2:2004. EN10210-1:2006

**DESIGN**

Eurocodes 1 & 3

**MANUFACTURE**

EN1090-1:2009 +A1:2011 CE marking standards

\* The above information is provided for information purposes only and subject to site specific alterations at contract stage.

## SLX3/T: GUYED LATTICE MAST (LIGHT DUTY)

- Light duty guyed mast (380mm - 500mm face width).
- Ideal for Broadcast, PMR & Wireless Links.
- Climbing steps incorporated into one face.
- 80m version available as a temporary solution for Meteorology.
- Included are guy wires, guy anchors, base plate, earthing etc.
- Accessories include Anti climb frame, Fall arrest system, Aviation lights etc



<b>MAST HEIGHT</b>	24m	36m	80m
<b>GUY RADIUS</b>	19m	28m	63m
<b>GUY WIRES</b>	6mm RHOL galvanised	8mm RHOL galvanised	8mm RHOL galvanised
<b>GALVANISING</b>	BS EN ISO 1461 - 85 microns. (Upgrades available for coastal sites)		
<b>MATERIALS</b>	EN10025-2:2004. EN10210-1:2006. Grades S275 & S355		
<b>DESIGN</b>	Eurocodes 1 & 3		
<b>MANUFACTURE</b>	EN1090-1:2009 +A1:2011 CE marking standards		

\* The above information is provided for information purposes only and subject to site specific alterations at contract stage.

## SLX4/T: GUYED LATTICE MAST (HEAVY DUTY)

- Heavy duty guyed mast (600mm – 1000mm face width).
- Ideal for Broadcast, Microwave & Wireless Links on High Sites.
- Face mounted climbing ladder & Anti twist frames (as required).
- 160m version available for Meteorology.
- Included are guy wires, guy anchors, base plate, earthing etc.
- Accessories include Anti climb frame, Fall arrest system, Aviation lights etc.



<b>MAST HEIGHT</b>	36m	80m	100m
<b>GUY RADIUS</b>	28m	63m	78m
<b>GUY WIRES</b>	8mm RHOL galvanised	8mm RHOL galvanised	10mm RHOL galvanised
<b>GALVANISING</b>	BS EN ISO 1461 - 85 microns. (Upgrades available for coastal sites)		
<b>MATERIALS</b>	EN10025-2:2004. EN10210-1:2006. Grades S275 & S355		
<b>DESIGN</b>	Eurocodes 1 & 3		
<b>MANUFACTURE</b>	EN1090-1:2009 +A1:2011 CE marking standards		

\* The above information is provided for information purposes only and subject to site specific alterations at contract stage.



## SLX5/T: SELF SUPPORTING LATTICE TOWER

- Available in light (LD), medium (MD) & heavy duty (HD) version
- LD is a Slimline structure (all welded modules).
- MD is Tubular structure (triangular or square).
- HD is Angle structure (square in plan).
- 160m version available for Meteorology.
- Included are foundation frame & access ladder.
- Accessories include Anti climb frame, Fall arrest system, Aviation lights, platforms etc.



<b>MAST HEIGHT</b>	Site specific for payload application
<b>FOUNDATIONS</b>	Site specific for payload and local environmental conditions
<b>GALVANISING</b>	BS EN ISO 1461 (85 microns - upgrades available for coastal sites)
<b>MATERIALS</b>	EN10025-2:2004. EN10210-1:2006. Grades S275 & S355
<b>DESIGN</b>	Eurocodes 1 & 3
<b>MANUFACTURE</b>	EN1090-1:2009 +A1:2011 CE marking standards

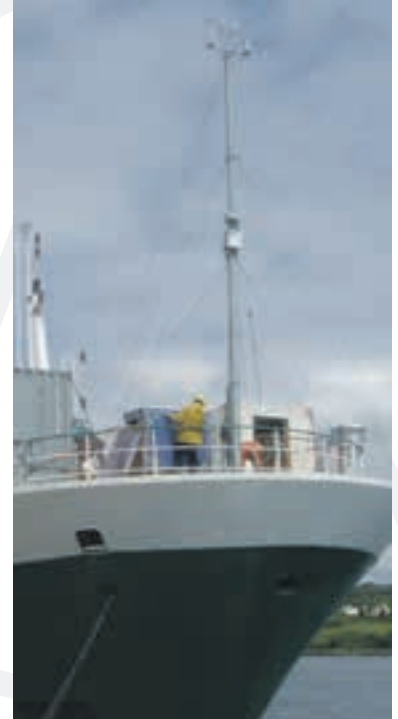
\* The above information is provided for information purposes only and subject to site specific alterations at contract stage.

## ACCESSORIES AND CUSTOM DESIGNS

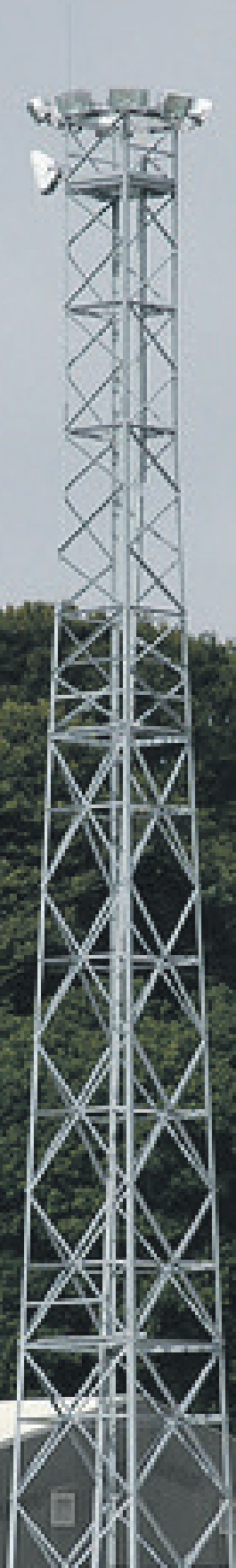
Why not compliment your SLX Mast, Tower or Monopole purchase with fittings from Data Structures and other leading suppliers.

- ACCESS LADDERS
- AVIATION LIGHTING
- ANTENNA SUPPORT STEELWORK
- ANTI-CLIMB FRAMES
- ANTI-TWIST GUY FRAMES
- BIRD FLIGHT DETERRANTS
- CABLE MANAGEMENT BRACKETS
- EARTHING KITS
- FALL ARREST SYSTEMS
- GALVANISING UPGRADE TO 115 MICRONS
- HIGH VISIBILITY DAYLIGHT MARKERS
- MET SENSOR SUPPORT BOOMS
- OVERHEAD CABLE GANTRIES
- REST / WORK PLATFORMS
- ROOFTOP ANTENNA BALLAST MOUNTS
- ROOFTOP ANTENNA STEELWORK
- TOWER STRENGTHENING STEELWORK

Data Structures also offer Custom Designs or modified standard designs for unusual applications such as shrouded structures, Tilttable tubular & lattice masts and Heavy ice loading structures. We also design tower strengthening steelwork for existing installations.



EXPERTS IN ELEVATED ENGINEERING



**DATA**  
**STRUCTURES**

EXPERTS IN ELEVATED ENGINEERING



TELECOMS TOWERS

**DATA STRUCTURES**  
**73 Kenilworth Square East**  
**Dublin D06 YY44**  
**Ireland**

**TELEPHONE:**  
**+ 353 (0)86 2560 250**  
**EMAIL:**  
**info@datastructures.ie**



**KONA**  
STRUCTURES INTERNATIONAL

[WWW.DATASTRUCTURES.IE](http://WWW.DATASTRUCTURES.IE)  
[WWW.KONASTRUCTURES.COM](http://WWW.KONASTRUCTURES.COM)

**CE**  
EN 1090